

# RIDGID

## B-500 Transportable Pipe Beveller



**Set-up and bevel 12" diameter schedule 40 pipe in one pass in under 2 minutes using the new B-500 Transportable Pipe Beveller. (Pipe capacity: 4" diameter and larger, 3/16" - 1/2" wall - See Specifications.)**

### *Speed*

- Set-up And Bevel 12" Diameter Schedule 40 Pipe In Under 2 Minutes!
- Pipe Is Cool To Touch Immediately Following Bevelling

### *Consistency*

- Accurate Bevel Angle Around Diameter Of The Pipe Allows For Optimal Number Of Cover Passes
- Adjustable Land Width From 0" to 3/16" To Fit Welders' Requirements
- Produces A Machined Finish Due To 6 Replaceable Cutter Inserts Working Simultaneously

### *Simplicity*

- Fast To Set-up And Operate
- Patent-Pending Clamp System Firmly Secures Tool To The Pipe
- Speed Monitoring With LED Indicators For Optimal Cutter Performance
- Spark Free Operation



Beveller shown on  
TBM-36 Beveller  
Adapter (Cat. # 55023)  
for fixed bevelling.

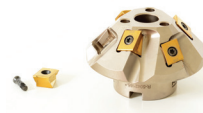
## SPECIFICATIONS

- Capacity ..... 4" Pipe And Larger, Flat Plate
- Pipe Wall/Plate Thickness ..... Min 0.188" (4.8 mm)/Max 0.50" (12.7 mm)
- Bevel Angles ..... 37.5° (Standard - Included)  
30° and 45° (with Optional Cutter Heads)
- Cutter Head ..... Rated For Most Steel & Stainless Steel\*
- Weight ..... 52.5 lbs. (23.8 kg), Tool Weight
- Size ..... 15.8 in. (401 mm) L x 11.5 in. (292 mm) W x 13.3 in. (338 mm) H
- Land Width ..... 0" - <sup>3</sup>/<sub>16</sub>" (4.8 mm) in approximately <sup>1</sup>/<sub>32</sub>" (0.8 mm) increments
- Motor Type..... Universal Single Phase
- Motor Rating..... 1.2 HP, 115V, 50/60Hz
- Amps ..... 13A (115V),
- Operating Speed ..... (No Load): 950 RPM (115V)
- Body ..... Steel Frame
- Standard Equipment ..... Beveller, Manual Crank Handle, 37<sup>1</sup>/<sub>2</sub>° Cutter Head, 6 – 4 Edged Inserts, Torque Driver, and Screws

\* Beveller cutting head and inserts are optimized for standard A53 mild steel pipe. Reduced insert life can be expected on other materials.

## ORDER INFORMATION

CATALOG NO.	DESCRIPTION	WEIGHT (lb.)	(kg)
49298	Transportable Pipe Beveller w/37 <sup>1</sup> / <sub>2</sub> ° Cutter Head 115V	56.5	24
55088	Transportable Pipe Beveller w/30° Cutter Head 115V	56.5	24
55083	Transportable Pipe Beveller w/45° Cutter Head 115V	56.5	24
48863	37 <sup>1</sup> / <sub>2</sub> ° Cutter Head w/6 Inserts, 1 Anti-Seize Grease, 8 Screws	2.5	1.1
48858	30° Cutter Head w/6 Inserts, 1 Anti-Seize Grease, 8 Screws	2.5	1.1
48868	45° Cutter Head w/6 Inserts, 1 Anti-Seize Grease, 8 Screws	2.5	1.1
55023	TBM-36 Beveller TRISTAND® Adapter	6.8	15
48873	Pack of 6 Inserts 1 Anti-Seize Grease, 2 Screws, Case	0.25	0.11
48883	Anti-Seize Grease – 1 Tube	—	—
48888	Torx Wrench T15/S7	0.05	0.02
48893	Spanner Wrench	0.15	0.06
48898	<sup>5</sup> / <sub>16</sub> Hex Wrench	0.17	0.08



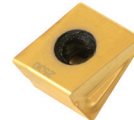
Catalog No. 48863 - 37<sup>1</sup>/<sub>2</sub>°  
Catalog No. 48858 - 30°  
Catalog No. 48868 - 45°



Catalog No. 55023



Catalog No. 48888



Catalog No. 48873



Model 460-12 Portable  
TRISTAND® Chain Vise  
Catalog No. 36278



Model 258XL  
Power Pipe Cutter  
Catalog No. 58227



No. 461 Straight Pipe  
Welding Vise  
Catalog No. 40220



No. 462 Angle Pipe  
Welding Vise  
Catalog No. 40225



No. 463 Elbow Pipe  
Welding Vise  
Catalog No. 40230



No. 464 Flange Pipe  
Welding Vise  
Catalog No. 40235

999-997-961.10